

Helping Donors Do Good Work...**FOREVER**



Annual Report
2007



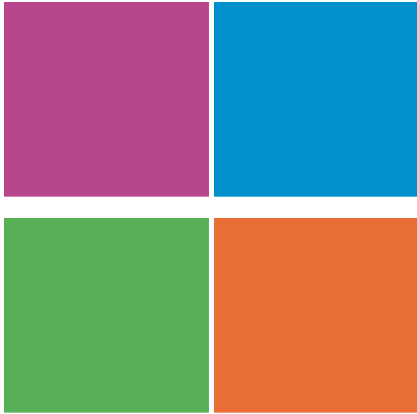
It was just six years ago

that a handful of individuals joined together to establish our very own Community Foundation.

The Community Foundation of North Central Massachusetts is a nonprofit, community corporation created by and for the people of greater North Central Massachusetts. We are here to help our donors make a positive impact on their community.

More than \$5.1 million

in grants and distributions have been made into the community since our inception.



Building blocks for a vibrant community

Community. The ubiquitous word gets a lot of use. Not only is it in our name, we utilize it regularly in our newsletter articles and other printed material. Politicians will frequently use the word in their stump speeches.

Like so many words, its origin is from Latin. *Community* is derived from *communitas* (meaning the same), which in turn derived from *communis* (common, public, shared by all or many).

For the Foundation, it is the cornerstone for everything we do. As you can see from our purpose statement on the opposite page, we were created by and for the people in our *community*.

We view the tenets for a vibrant *community* as building blocks. It includes a wide-range of opportunities and resources – from helping kids get ready for school to providing transportation for medical care.

This past year, we established a grant distribution committee, to help us better identify these important building blocks. As a result of their work, the Foundation distributed 11 new grants totaling \$120,000 from our general endowment.

We once again funded the very successful Summer-Up program, an initiative designed to decrease crime by creating youth recreational and academic opportunities. In addition, we funded 10 other important initiatives - from creating open space to preserving quality and affordable housing. You'll find more on these and other programs in this report.

Between our general endowment grants and donor advised distributions, the Foundation distributed over \$2 million last year. This wouldn't have been possible without the continued growth and confidence of our donors.

Through their work with the Foundation, we are fortunate to have a committed group of volunteers that invest considerable time, talent and treasure into the *community*. So thank you!

As we look forward to next year, we will continue to build upon the blocks that create opportunities for everyone in our *community*.



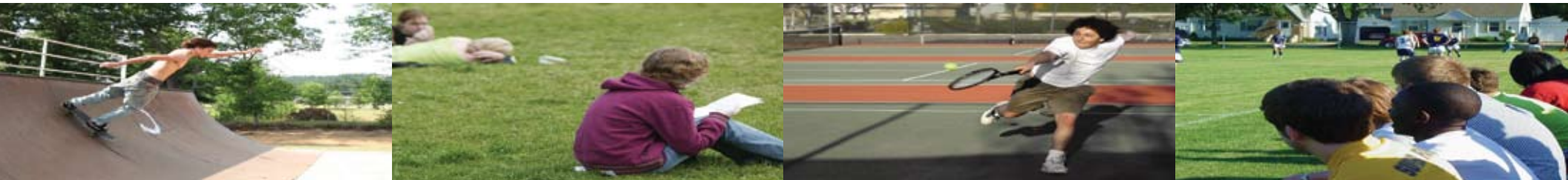
Thomas F. Bagley, III

Chairman
Community Foundation of North Central Massachusetts



Investing in our children. For the past two years the Community Foundation has funded the very successful Summer Up program.





The Summer Up 2007 program helped combat the growing crime rate in our cities while addressing the disparities in access to summer school among the most at-risk youth.

One hundred and fifty children from Fitchburg, Leominster and Gardner received academic, job readiness and recreational support through the program this past summer. The results included:

- 150 youth employed through Summer Up
- Daily attendance at the sites averaged 371 elementary students
- 110 students were provided with Summer Up summer school vouchers to help them get credits to advance to the next grade level
- 54% of the youth thought they contributed to their community because of the program (an increase of 3% over last year)
- 71% reported a reduction in risky behaviors compared to last summer





United Neighbors of Cleghorn will use their \$19,810 Community Foundation grant to identify and help prioritize unsafe housing in Fitchburg. The goal is to work with property owners to preserve quality and affordable housing for the city's low-income population.

In 2007, the Community Foundation awarded grants from its general endowment touching lives throughout North Central Massachusetts.

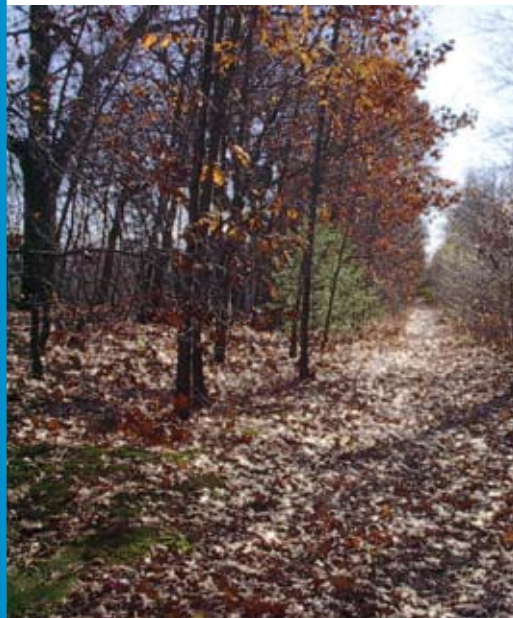
The Community Health Center of Franklin County received \$19,000 from the Community Foundation, which will provide transportation for hospital and doctor visits to 300 residents in the North Quabbin region. The program goal is to reduce re-hospitalization rates by half.





Promoting volunteersim

North Quabbin Time Bank, a program in the greater Athol region, will encourage people to volunteer. In return, they will earn volunteer credits, which can be used to secure services that they otherwise might not be able to afford or have the ability to perform themselves. The Foundation's \$2500 grant will fund the program.



Creating public access to open space

A \$7,750 grant to the Leominster Land Trust will create comprehensive trail maps for all the natural space in Leominster. The map in both English and Spanish will improve the health of the watershed areas by encouraging proper use and reducing illegal activities. In addition, it will detail public access to a vast network of hiking trails, encouraging greater and safer use of the trail system



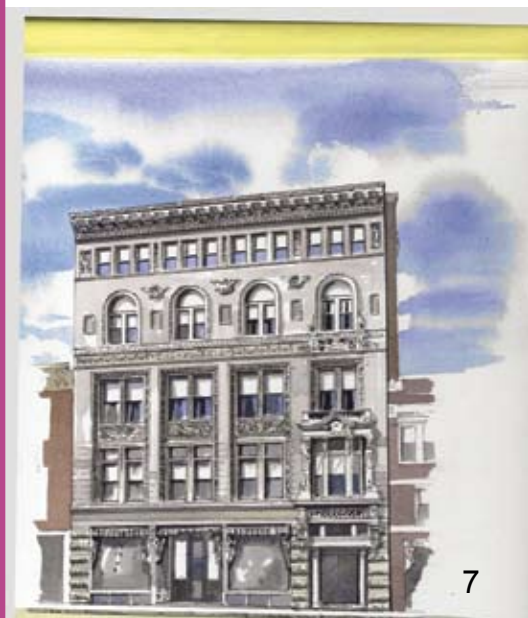
End of life care for the most venerable

Matson Community Services was awarded \$5,000 to develop an End of Life Care training program for staff and families of people with developmental disabilities.

Matson Community Services in collaboration with its sister agency ARC Community Services and the Gardner VNA will develop a training program for staff and families dealing with end of life care. Although geared to people with developmental disabilities, the core foundation of this training could be used by any agency in the community dealing with end of life care.

Bringing Fitchburg's history to life

The Fitchburg Historical Society also received \$7,750 to expand its program that is providing public school students the opportunity to see, touch and hear about the city's history, which is not available through the school's curriculum.



Agati, Inc. - <i>\$41,870</i>	Fitchburg Historical Society - <i>\$34,516</i>	Loaves and Fishes - \$2,250	Saint Rosa's Home - \$247
American Heart Association - <i>\$1,000</i>	Fitchburg State College Foundation - <i>\$3,000</i>	Marcoux Upholstery, Inc. - <i>\$3,075</i>	Salvation Army - <i>\$4,000</i>
Applewild School - <i>\$15,000</i>	Friends of Groton Elders - <i>\$250</i>	Michael Letarte - <i>\$2,000</i>	School Specialty, Inc. - <i>\$1,950</i>
Arc of North Central Inc. - <i>\$2,000</i>	Friends of the Ashby Free Public Library - <i>\$200</i>	Morgan Memorial Goodwill - <i>\$6,000</i>	South End Community Health Center - <i>\$16,274</i>
Ashburnham Little League - <i>\$500</i>	Friends of Townsend Library - <i>\$2,000</i>	Mr Thomas F. DeCarolis - <i>\$1,000</i>	Spanish American Center Inc. - <i>\$71,390</i>
Battered Women's Resources Inc. - <i>\$690</i>	Friends of Townsend Seniors - <i>\$800</i>	Mr. Christopher J. Goody - <i>\$500</i>	St Leo's Parish Building Fund - <i>\$2,000</i>
Bentley College - <i>\$1,000</i>	Fruitlands Museums Inc. - <i>\$750</i>	Ms. Chelsey Cormier - <i>\$1,000</i>	St. Anna's Church Restoration Fund - <i>\$500</i>
Boys & Girls Club of North Central MA - <i>\$379,680</i>	Gaylord Bros. Inc. - <i>\$926</i>	Ms. Deb Spratt - <i>\$33</i>	St. Bernard's Central Catholic H.S. Athletic - <i>\$400</i>
Camp Lowe Scholarship Fund - <i>\$570</i>	Greater Worcester Community Foundation - <i>Paul J. Gramling - \$500</i>	Ms. Mary Chapin Durling - <i>\$6,000</i>	T.A.P. Youth Basketball - <i>\$250</i>
Children's Community Fund - <i>\$250</i>	Groton Community Foundation Fund - <i>\$1,000</i>	Ms. Vicky Smith - <i>\$4,162</i>	Teddy Bear Land, Inc. - <i>\$4,000</i>
Cleghorn Neighborhood Center - <i>\$284,842</i>	Groton Conservation Trust - <i>\$1,250</i>	Mt. Wachusett Community College - <i>\$57,000</i>	Thayer Symphony Orchestra Inc.- <i>\$96,934</i>
Clinton First Partnership and Foundation LTD - <i>\$500</i>	Groton Dunstable Alliance for Youth - <i>\$250</i>	Multi-Service Center - <i>\$1,000</i>	The Doyle Field Foundation - <i>\$2,600</i>
Clinton YMCA - <i>\$350</i>	Groton Dunstable Athletic Booster Club - <i>\$250</i>	Nashua River Watershed Association Inc. - <i>\$155,296</i>	Townsend Cooperative Playschool - <i>\$250</i>
Colby College Annual Fund - <i>\$5,000</i>	Groton Dunstable Education Foundation - <i>\$5,000</i>	Nashua Valley Council Boy Scouts of America - <i>\$55,928</i>	Townsend Ecumenical Outreach - <i>\$5,000</i>
Community Foundation of North Central MA - <i>\$148,097</i>		National Fire Safety Council, Inc. - <i>\$340</i>	Townsend Little League - <i>\$200</i>

Donor Advised Funds are established by individuals who want to play an active role in the distribution process. Donors have the flexibility to target their funds to a specific cause or a range of agencies or programs that they care about. This year over \$2.7 million in distributions were made from Foundation funds to a variety of wide ranging community needs.

Community Health Connections/Family Health Center - <i>\$17,100</i>	Groton Historical Society - <i>\$1,000</i>	NEADS - <i>\$2,820</i>	Trust for Public Lands (Surrenden Farm) - <i>\$75,000</i>
Community Healthlink - <i>\$54,012</i>	Groton Public Library Endowment Trust - <i>\$250</i>	New England Forestry Foundation - <i>\$250</i>	Tucker Library Interiors, LLC - <i>\$17,734</i>
Creative Library Concepts - <i>\$46,780</i>	Groton Scholarship Committee - <i>\$250</i>	Newstamp Lighting Corp. - <i>\$7,300</i>	United Way of Central Central Alabama - <i>\$47,714</i>
Creative Pavillion - <i>\$33,624</i>	Hawthorne Brook Middle School Band Booster - <i>\$100</i>	NM All Sports Athletic Boosters - <i>\$100</i>	United Way of Greater Ennis - <i>\$44,752</i>
Crocker Field Restoration Fund - <i>\$2,500</i>	HealthAlliance - <i>\$2,500</i>	NMRS Scholarship Fund - <i>\$5,000</i>	United Way of Greater Stark County - <i>\$38,622</i>
D & G Auto Body - <i>\$525</i>	Huston & Company - <i>\$8,168</i>	North Central Charter Essential School - <i>\$30,000</i>	United Way of Lake Havasu - <i>\$38,580</i>
Dell Maketing, L.P. - <i>\$19,419</i>	Indian Hill Music Center - <i>\$38,700</i>	North Middlesex Pop Warner - <i>\$250</i>	United Way of Laurens County - <i>\$47,002</i>
DS Graphics - <i>\$6,233</i>	JBM Silkscreen - <i>\$410</i>	North Quabbin Community Coalition - <i>\$21,000</i>	United Way of North Central Massachusetts - <i>\$569,198</i>
Easter Seals Massachusetts - <i>\$2,000</i>	Jimmy Fund Walk - <i>\$100</i>	Office Environments of N.E. - <i>\$1,645</i>	United Way of Tri-County - <i>\$6,000</i>
Equipment Envirnmnts, Inc. - <i>\$5,297</i>	Laurens County Diabetes Center - <i>\$300</i>	Our Father's House Inc. - <i>\$3,000</i>	Unlimited Promotions - <i>\$4,743</i>
Families of Spinal Muscular Atrophy - <i>\$100</i>	Lawrence Academy - <i>\$4,00</i>	P.A.T. Youth Hockey - <i>\$1,000</i>	Village School - <i>\$15,000</i>
First Parish Church - <i>\$450</i>	Leominster Public Library - <i>\$500</i>	Pan Mass Challenge - <i>\$100</i>	Vintage Vending, Inc. - <i>\$4,491</i>
Fitchburg Art Museum - <i>\$14,250</i>	Literacy Volunteers of Montachusett Area - <i>\$247</i>	Perrylocal School District - <i>\$2,000</i>	
Fitchburg Cycling Club - <i>\$10,000</i>		Pinepoint School - <i>\$18,000</i>	



Representatives from the Crocker Field Restoration Committee receive a contribution to their fund.

Donor Funds are convenient, flexible tools for individuals, families, businesses, or groups that want to be personally involved in suggesting grant awards made possible by their gifts. This past year, 16 new funds were established with the Community Foundation.

Brown/Peterson Family Foundation Fund - *To support the charitable interests of the donor and to benefit the General Endowment of the Community Foundation of North Central Massachusetts.*

North Quabbin Citizen Advocacy Endowment Fund - *Established as an endowed fund to benefit the North Quabbin Citizen Advocacy.*

Community Health Legal Services Fund - *Supporting the work of the Community Health Legal Services.*

Crocker Field Restoration Fund - *An agency fund dedicated to the restoration of Crocker Field in Fitchburg, Massachusetts.*

Fort Devens Museum Fund - *As an agency fund it will benefit the Fort Devens Museum.*

Fitchburg Access Television Fund - *A fund that will support Fitchburg Access Television.*

Friends of Townsend Seniors Fund - *Dedicated to supporting the Friends of Townsend Seniors.*

K.R.C. Family Fund - *An endowed fund to benefit the General Endowment of the Community Foundation of North Central Massachusetts.*

Kyle G. Flood Scholarship Fund - *To provide scholarships to graduating seniors at R.C. Mahar Regional High School.*

Lance Corporal Geoffrey Cayer Fund - *To support programs that were of interest to Geoffrey in North Central Massachusetts.*

Leominster Education Foundation Fund - *Established as an agency fund dedicated to supporting the Leominster Education Foundation.*

William E. May Endowment Fund - *An endowed fund to benefit the Friends of Townsend Seniors.*

Nashua River Watershed Association Endowment Fund - *Established as an endowed fund to benefit the Nashua River Watershed Association.*

Fitchburg Police Support Fund - *To support the work of the Fitchburg Police Department.*

The Village School New Building Fund - *To provide funds to build a new home for The Village School.*

Pearl A. Russell – Howard Park/Townsend Historical Society Fund - *Established as an endowed fund to protect Howard Park and benefit the Townsend Historical Society.*

Anonymous Funds (3) (2004) - Donor advised funds to support the charitable interests of the donors.

Christopher J. Alvarez Endowment Fund (2004) - To support educational health programs at the Boys & Girls Club of North Central Massachusetts.

Anderson, Bagley & Mayo Fund (2005) - An endowed fund to benefit the communities of North Central Massachusetts.

Ronald M. Ansin Fund (2000) - To support the charitable interests of the donor.

ARC Community Services Legacy Fund (2005) - This is an agency fund dedicated to "Helping people with disabilities reach their full potential".

Athol Area YMCA Fund (2004) - Dedicated to supporting the YMCA programs in the Athol area.

Boys & Girls Club of North Central Massachusetts Fund (2002) - To benefit the Boys & Girls Club.

Doyle Field Foundation Endowment (2006) - To provide for the maintenance and future needs of Doyle Field in Leominster, Massachusetts.

The Dream Endowment (2004) - Created by Andrea and Sergio Paez to provide an opportunity for underprivileged immigrant students to go to college.

Fitchburg Historical Society Capital Campaign Fund (2004) - To provide funds to purchase and renovate a new home for the Fitchburg Historical Society.

Fitchburg Historical Society Endowment Fund (2006) - Created to provide funds to support the Fitchburg Historical Society.

Charles & Janis Gelinas Fund (2004) - To support the charitable interests of the donors.

Groton Community Foundation Fund (2005) - To provide funds to build and maintain a Community Center in the town of Groton, Massachusetts.

Maranda-Gosselin Charitable Fund (2004) - To support the charitable interests of the donors.

Montachusett Society for the Preservation of Historic Buildings Fund (2005) - To provide funds to preserve historic buildings.

Nashoba Literacy Fund (2001) - To support literacy in the Nashoba region and North Central Massachusetts.

Nashoba Valley Community Health Care Fund (2006) - Created to support the general purposes of community health care in the Nashoba Region with areas of focus in health education of the general public, hospice care, home health care and long term care services.

Nashoba Valley Professional Health Care Education Fund (2006) - The fund will support professional education for employees of health care facilities, which includes nurses and technicians, in the Nashoba region.

Orchard Hills Charitable Foundation Fund (2003) - To improve the quality of life for disadvantaged and/or disabled people of all ages by way of nurturing a healthy lifestyle through exercise and proper nutrition.

Melinda L. Persons Domestic Violence Educational Endowment Fund (2005) - To provide domestic violence educational programming through Battered Women's Resources, Inc.

Timothy W. Richards Fund (2004) - To support the charitable interests of the donors.

Ritter Memorial Library Fund (2003) - To benefit the Lunenburg Public Library.

Serra Club Endowment Fund (2005) - To benefit the Serra Club of Worcester Northern.

SHINE Initiative Fund (2006) - Created as a Field of Interest Fund to benefit mental illness research, advocacy/awareness and direct service & support.

Sterilite Corporation Fund (2005) - Established to support the charitable interests of the donor.

The Community Foundation provides a simple, powerful and highly personal approach to giving. We offer a variety of giving tools to help people achieve their charitable goals. In six short years, 81 funds have been established.

Boys & Girls Club of NCM Endowment Fund (2003) - To support after school programs for children in North Central Massachusetts.

CAVU Foundation Fund (2004) - Created to fund unmet pediatric healthcare needs.

Choose To Be Part Of Your Miracle Foundation Fund (2005) - To support the charitable interests of the donors.

Cleghorn Neighborhood Center Community Initiative Fund (2004) - For the betterment of the Cleghorn Community Leadership Development / Task Forces.

Community Health Connections Family Health Center Fund (2004) - To benefit the Community Health Connections Family Health Center.

Connors Family Fund (2004) - To support the charitable interests of the donors.

House of Peace and Education Fund (2004) - To maintain funds to benefit the House of Peace and Education in Gardner.

Ted & Connie Lapres Fund (2006) - To support the charitable interests of the donor.

Michael & Debbie Lefebvre Fund (2004) - To support the charitable interests of the donors.

Leominster Library Building Fund (2003) - To provide funds to expand and renovate the Leominster Library.

Loaves & Fishes Endowment Fund (2006) - Established to benefit the Loaves & Fishes Food Pantry in North Central Massachusetts.

Longsjo Legacy of Champions Fund (2004) - To provide funds for the Fitchburg Longsjo Classic Cycling Race held each July and to promote the sport of cycling in North Central Massachusetts.

Nashua River Watershed Association Fund (2005) - To enhance the capacity of the Nashua River Watershed Association to protect and manage natural resources in the Nashua River Watershed.

Nashua Valley Council Boy Scouts of America Fund (2006) - Created to support the scouting programs within the Nashua Valley Council.

Nashua Valley Council Boy Scouts Endowment Fund (2004) - To support the scouting programs within the Nashua Valley Council.

Helen Nobile Fund (2001) - To support literacy and St. Rosa's Home.

Nobile Family Fund (2003) - To support the charitable interests of the donors.

North Central Massachusetts Literacy Endowment Fund (2000) - To promote literacy in North Central Massachusetts.

North Quabbin Community Coalition Fund (2006) - Established to benefit the work of the North Quabbin Community Coalition.

Thayer Symphony Orchestra Endowment (2006) - Established to benefit the work of the Thayer Symphony Orchestra.

Twin City Trail Association Fund (2003) - To provide funds to develop recreational trails in the cities of Fitchburg and Leominster.

United Way Fund (2001) - Established by the United Way of North Central Massachusetts to create an additional source of operating income for programs and services.

Valuing Our Children Fund (2004) - To maintain funds to benefit Valuing Our Children in Athol, Massachusetts.

David C. Wells Memorial Fund (2003) - To memorialize a community leader and further his charitable interests.



United Neighbors of Cleghorn, which received a grant to identify and prioritize unsafe housing in Fitchburg, MA.

Community Foundation of North Central Massachusetts General Endowment (2001) - This and the regional endowment funds have been established to respond to a wide range of community needs. The flexibility of your unrestricted gift enables your community foundation's program experts to respond to the community's most pressing needs, today and tomorrow.

For donors that want to target their gift to a specific region, the Foundation created four unrestricted regional funds, the Greater Gardner Fund, Nashoba Valley Fund, North Quabbin Fund and Twin Cities Fund

Scholarship Funds

Cheryl Ann Cetrino-Fish Scholarship Fund (2004) - *To provide scholarships to graduating seniors at Lunenburg High School.*

Robert C. Langlois Scholarship Fund (2002) - *Created by family and friends to provide for graduating seniors of Gardner High School.*

Narransett Regional High School Class of 1973 Scholarship Fund (2004) - *The NRHS Class of 1973 provides scholarships for graduating seniors at Narransett Regional High School.*

Mark Osowski Memorial Scholarship Fund (2004) - *For striving young athletes graduating from Leominster High School.*

Pearl A. Russell Mathematics Scholarship Fund (2006) - *For graduating North Middlesex Regional High School majoring in the field of Mathematics.*

Rotary Club of Fitchburg Scholarship Fund (2005) - *For graduating seniors in the city of Fitchburg, Massachusetts.*



Catelynn Melus of Townsend received the first scholarship from the recently established Pearl A. Russell Mathematics Fund.

statement of financial position

June 30, 2007 and 2006

ASSETS	<u>2007</u>	<u>2006</u>
Cash	\$ 29,403	\$ 15,906
Short-term Investments	1,060,223	662,570
Contributions Receivable	109,611	55,540
Other Receivable	24,320	10,614
Inventory	2,578	13,715
Prepaid Expenses	7,487	4,324
Long-term Investments	12,845,491	10,290,585
Plant & Equipments, Net	<u>23,564</u>	<u>23,024</u>
Total Assets	<u>\$14,102,677</u>	<u>\$11,076,278</u>
LIABILITIES & NET ASSETS		
Accounts Payable & Accrued Expenses	\$ 55,378	\$ 12,318
Grants Payable	139,810	4,548
Agency Funds & Endowments	<u>4,822,888</u>	<u>2,403,107</u>
Total Liabilities	<u>5,018,076</u>	<u>2,419,973</u>
Net Assets		
Unrestricted Net Assets		
Operating	65,546	37,544
Board Designated For Charitable Purpose	1,850,795	1,106,097
Fixed Assets	<u>23,564</u>	<u>23,024</u>
Total Unrestricted Net Assets	<u>1,939,905</u>	<u>1,166,665</u>
Temporarily Restricted Net Assets	5,396,630	6,208,291
Permanently Restricted Net Assets	<u>1,748,066</u>	<u>1,281,349</u>
Total Net Assets	<u>9,084,601</u>	<u>8,656,305</u>
Total Liabilities & Net Assets	<u>\$14,102,677</u>	<u>\$11,076,278</u>

statement of activities

For the years ending June 30, 2007 and 2006

	<u>Unrestricted</u>	<u>Temporarily Restricted</u>	<u>Permanently Restricted</u>	<u>Totals 2007</u>	<u>Totals 2006</u>
REVENUES					
Contributions	\$ 1,057,127	\$ 131,742	\$ 466,717	\$ 1,655,586	\$ 5,620,341
Donated Space	3,600	0	0	3,600	3,600
Investment Income	38,318	421,122	0	459,440	240,581
Realized Gains (Losses) on Sale of Investments	21,729	55,876	0	77,605	25,093
Administrative Fee Revenue	39,660	0	0	39,660	16,437
Sponsorships	2,010	0	0	2,010	1,400
Operating Grant Contributions	138,583	10,000	0	148,583	161,451
Assets Released from Restrictions					
Expiration of Use Restrictions	<u>1,684,564</u>	<u>(1,684,564)</u>	<u>0</u>	<u>0</u>	<u>0</u>
Total Revenue	<u>2,985,591</u>	<u>(1,065,824)</u>	<u>466,717</u>	<u>2,386,484</u>	<u>6,068,903</u>
EXPENSES					
Management & General	113,418	0	0	113,418	100,334
Fund-raising	158,070	0	0	158,070	128,403
Program (excluding grants and donor advised distributions)	<u>15,336</u>	<u>0</u>	<u>0</u>	<u>15,336</u>	<u>12,990</u>
Total Expenses	<u>286,824</u>	<u>0</u>	<u>0</u>	<u>286,824</u>	<u>241,727</u>
Grants and donor advised distributions	<u>2,022,472</u>	<u>0</u>	<u>0</u>	<u>2,022,472</u>	<u>1,466,413</u>
Total Expenses & Donor Advised Distributions	<u>2,309,296</u>	<u>0</u>	<u>0</u>	<u>2,309,296</u>	<u>1,708,140</u>
INCREASE (DECREASE) IN NET ASSETS FROM OPERATIONS	676,295	(1,065,824)	466,717	77,188	4,360,763
OTHER INCREASE (DECREASE) IN NET ASSETS	<u>96,945</u>	<u>254,163</u>	<u>0</u>	<u>351,108</u>	<u>152,736</u>
Unrealized gain (loss) on investments					
INCREASE (DECREASE) IN NET ASSETS	773,240	(811,661)	466,717	428,296	4,513,499
NET ASSETS - BEGINNING OF PERIOD	<u>1,166,665</u>	<u>6,208,291</u>	<u>1,281,349</u>	<u>8,656,305</u>	<u>4,142,806</u>
NET ASSETS - END OF PERIOD	<u>\$ 1,939,905</u>	<u>\$ 5,396,630</u>	<u>\$ 1,748,066</u>	<u>\$ 9,084,601</u>	<u>\$ 8,656,305</u>

The complete audited financial statements by Regan & Company, LLP and IRS 990 are available by request by calling 978-345-8383. In addition, for the years the CFNCM is required to file IRS Form 990T it will be made available.

It is people who make an organization successful, we want to extend a warm thank you to all the volunteers and staff who make the work of the Foundation possible.

Officers

Thomas F. Bagley, III *Chairman*

Charles Gelinas, *Vice Chairman*

Steven L. Stone, *Treasurer*

William E. Aubuchon, III, *Clerk*

Philip M. Grzewinski, *President and
Recording Secretary*

Staff

Philip M. Grzewinski
President

Melissa Maranda
Director of Gift Planning

Marina Raher
Director of Finance

Nancy Daigle
Office Manager

Trustees



Ronald M. Ansin
*The Ronald M. Ansin
Foundation*



William E. Aubuchon, III
W.E. Aubuchon Co., Inc.



Thomas F. Bagley, III
*Anderson, Bagley &
Mayo Ins. Co.*



Norman Boudreau
*I-C Federal
Credit Union*



Paul Brown
*Leadership
Dynamics, Inc.*



Richard A. Cella
*Law Office
of Richard A. Cella*



Jan Cochran
*Peterborough Oil
Company, Inc.*



Martin F. Connors
*Fitchburg Savings
Bank*



George Gantz
Unitil



James Garrison
Kirtland Capital



Charles Gelinas
Gelinas & Ward, LLP



Philip M. Grzewinski
*United Way of
North Central MA*



David McKeehan
*N.C.M. Chamber
of Commerce*



Kevin Miller
Athol Credit Union



Richard Nobile
*I-C Federal
Credit Union*



C. Deborah Phillips
Attorney at Law



Tim Richards
*Orchard Hills
Athletic Club*



Albert Stone
*Sterilite
Corporation*



Steven L. Stone
*Sterilite
Corporation*

A map of the state of Massachusetts, with its 14 counties highlighted in green. The highlighted counties are: Barnstable, Berkshire, Bristol, Dukes, Essex, Franklin, Hampshire, Middlesex, Norfolk, Plymouth, Suffolk, Worcester, Yarmouth, and Nantucket. The other 10 counties are shown in white: Alameda, Butte, Colusa, Contra Costa, El Dorado, Fresno, Inyo, Kern, Mono, and San Bernardino. The map is labeled with the names of the counties.

- # The Foundation's mission

15



Telephone 978.345.8383

Fax 978.345.1459

www.cfncm.org



Community Foundation of North Central Massachusetts

285 John Fitch Highway, Suite 1
Fitchburg, MA 01420-5998

PRSTD STD
US POSTAGE
PAID 19
FITCHBURG, MA
PERMIT

